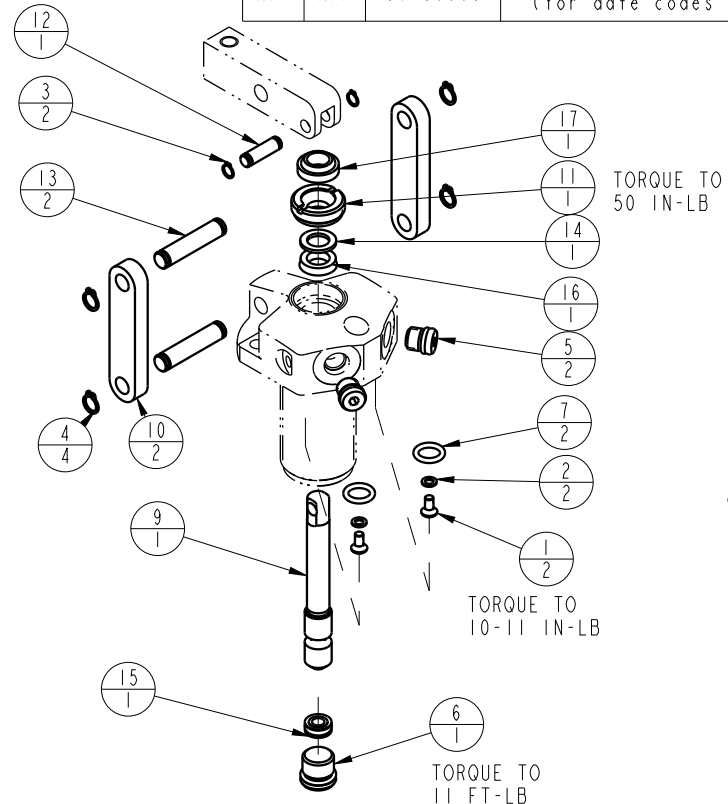



1			2		
MODEL NO.			MODEL NAME		
16620400			ASSY, LC, DA, 450		
NO.	QTY	PART NO.	DESCRIPTION	STD SEAL KIT	FKM SEAL KIT
1	2	21500019	SCREW, CAP, BTNH, M3 X 6, ALY		
2	2	21500200	WASHER		
3	2	23050020	RING, RTNG, EXT, 0.188	X	X
4	4	23050021	RING, RTNG, EXT, 0.250	X	X
5	2	30601122	PLUG, SOCH, SAE 2		
6	1	30670001	PLUG, SAE 4, FKM	X	X
7	2	39050042	O-RING, (-011)	X	39051025
8	1	67040065	TAG, LINK ASSY, LC		
9	1	81600006	PLUNGER, LC, DA, 450/2 KN		
10	2	81600021	LINK, LC, 450 lb		
11	1	81600036	RETAINER, LC, 450		
12	1	81600076	PIN, LC, SHORT, 450		
13	2	81600081	PIN, LC, LONG, 450		
14	1	39F54005	BU RING, (-109)	X	X
15	1	39H52037	SEAL, T, (3/16 X 3/32 X 3/8)	X	39V52037
16	1	39H52039	SEAL, BEVEL, 5/16 x 3/32 x 1/2	X	39V52039
17	1	39V53025	WIPER, SNAP-IN, (5/16)	X	X
N/A	N/A	60160001	KIT, SEAL, LC, 450/2 KN	NOTED	
N/A	N/A	6V160001	KIT, SEAL, LC, 450/2 KN, FKM (for date codes before 33/06)		
N/A	N/A	6V160009	KIT, SEAL, LC, 450/2 KN, FKM (for date codes after 33/06)		NOTED



2. ALL SEALS, BU RINGS, RETAINING RINGS, O-RINGS, AND PLUGS ARE INCLUDED IN THE SEAL KIT.

1. APPLY LUBRICANT TO ALL SEALS PRIOR TO ASSEMBLY.

NOTE:

<b>PARTS LIST</b>	 VEKTEK, INC. 1334 E. SIXTH AVE. P.O. BOX 625 EMPORIA, KS. 66801 U.S.A.	
	ASSEMBLIES AFFECTED 16620400	PARTS LIST, LC, DA, 450
SIZE A	PL1601	REV F

F	5718	RELEASE	NPETERS	6/9/25
REV	IN ACCORDANCE WITH ECN	EFFECTIVE DATE	REVISED BY	DATE
DRW BY: K. ROEMER	<b>DRAWING STATUS: Released</b>			
DATE: 07/30/04	PRODUCTION APPROVED FOR RELEASED STATUS ONLY			

SHEET 1 OF 1